



# PATROLEYES

## PatrolEyes DEMS 2.0 PC Install

Thank you for choosing the PatrolEyes Digital Evidence Management Software (DEMS). Our DEMS will allow you to manage your body camera data more efficiently and effectively. Please follow the steps below to install the software on your PC.

***Before You Install:*** The management of body camera data can be stressful on a computer and it is important that your computer is capable of managing the data or the user experience will degrade over time.

**Ensure your computer has a minimum of 8GB Ram, 1TB Storage a Quad-Core CPU, and Windows 10**

### **Table of Contents**

1. Installing Dependencies
  - a. [MySQL Database](#)
  - b. [LAVFilter](#)
2. [DEMS Download](#)
3. [DEMS Overview](#)
  - a. [Software Configuration](#)
  - b. [Binding USB Ports](#)
  - c. [User Management](#)
  - d. [Searching and Organizing Data](#)
  - e. [Video Playback](#)
  - f. [Software Settings](#)
4. [FAQs](#)

## **DEMS Introduction**

Digital Evidence Manager Software's standalone version provides a simple and easy-to-use solution to manage digital evidence. Simply connect a camera to a PC, and the software will automatically download the data from the camera to your local storage, the footage will delete off your camera once the download is complete.

The software uses simple tree-structure user management. Files will be categorized by the software username, which means files will be uploaded to specific folders based on which user you are logged into.

When a camera is connected to the PC, the software can directly set the User ID, Device ID, and Device User for cameras. The remaining battery percentage of cameras will be displayed on the software. Up to 24 cameras can upload simultaneously.

The software allows users to view, and add comments, case numbers, import tags, export, clip, and redact files uploaded. If files are encrypted, the software will decrypt the file automatically using the AES key set by the user. In the file manager, you can use (the name of the device user, User ID, Device ID, case number, date uploaded, etc) to search for the specified title.

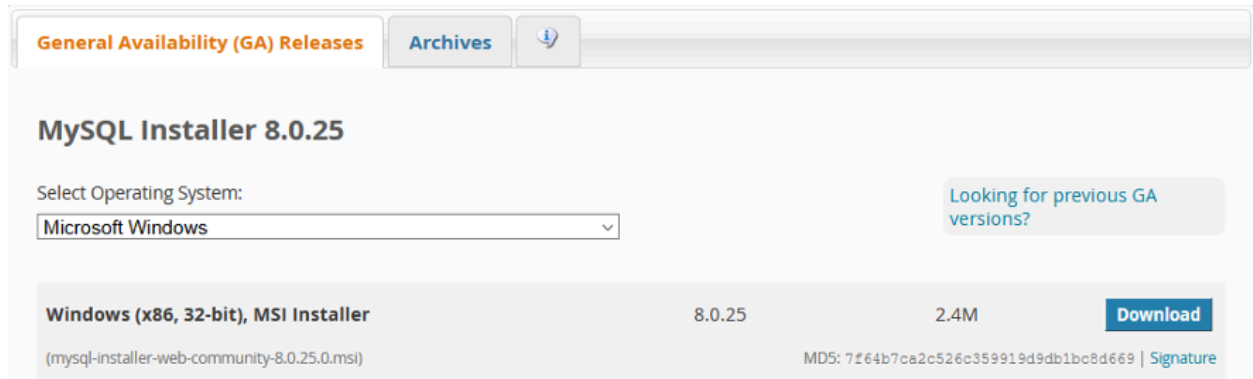
The software will record every operation, and the recorded details will be saved in Audit Logs, allowing the option to export these logs in a .CSV file.

RFID reader/writer can work on DEMS 2.0 to assign cameras. The user can also set the file retention period, low disk space warning, auto-sync PC date and time, and reset user ID after uploading.

# Dependencies - MySQL

1. Download MySQL community server edition

[MySQL Download](#)



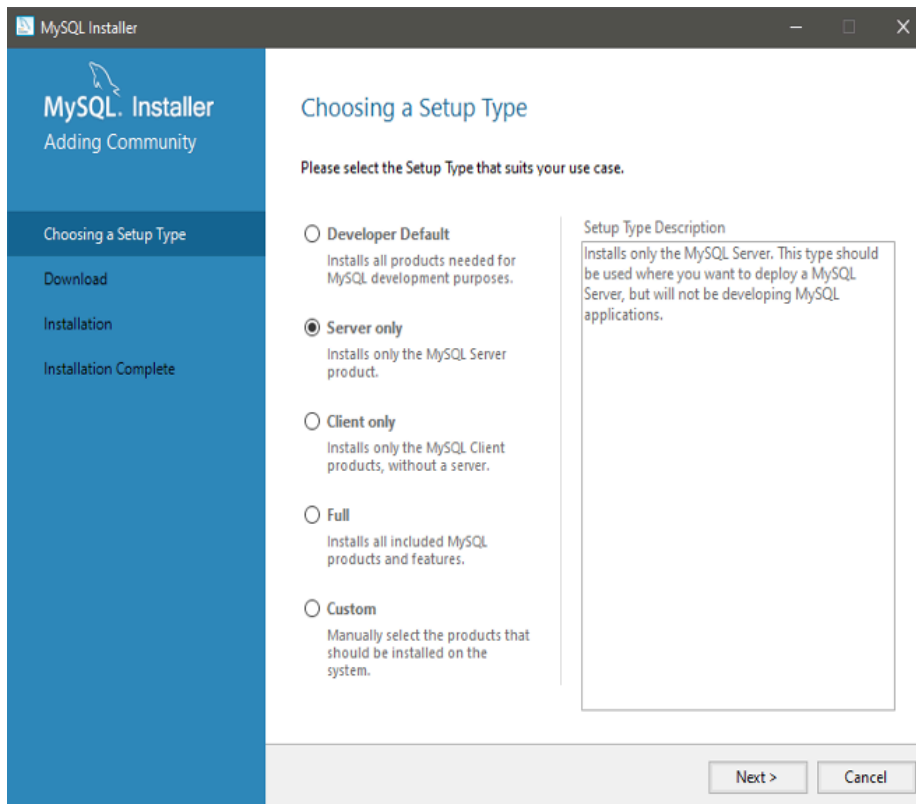
The screenshot shows the MySQL Download page for the MySQL Installer 8.0.25. The page has a navigation bar with "General Availability (GA) Releases", "Archives", and a download icon. Below the navigation bar, the title "MySQL Installer 8.0.25" is displayed. A dropdown menu for "Select Operating System:" is set to "Microsoft Windows". A button labeled "Looking for previous GA versions?" is visible. Below the dropdown, there is a table with columns for the installer name, version, size, and a "Download" button. The table entry is "Windows (x86, 32-bit), MSI Installer" with version "8.0.25" and size "2.4M". Below the table, the MD5 hash "7f64b7ca2c526c359919d9db1bc8d669" and a "Signature" link are provided.

Windows (x86, 32-bit), MSI Installer	8.0.25	2.4M	Download
(mysql-installer-web-community-8.0.25.0.msi)			

MD5: 7f64b7ca2c526c359919d9db1bc8d669 | [Signature](#)

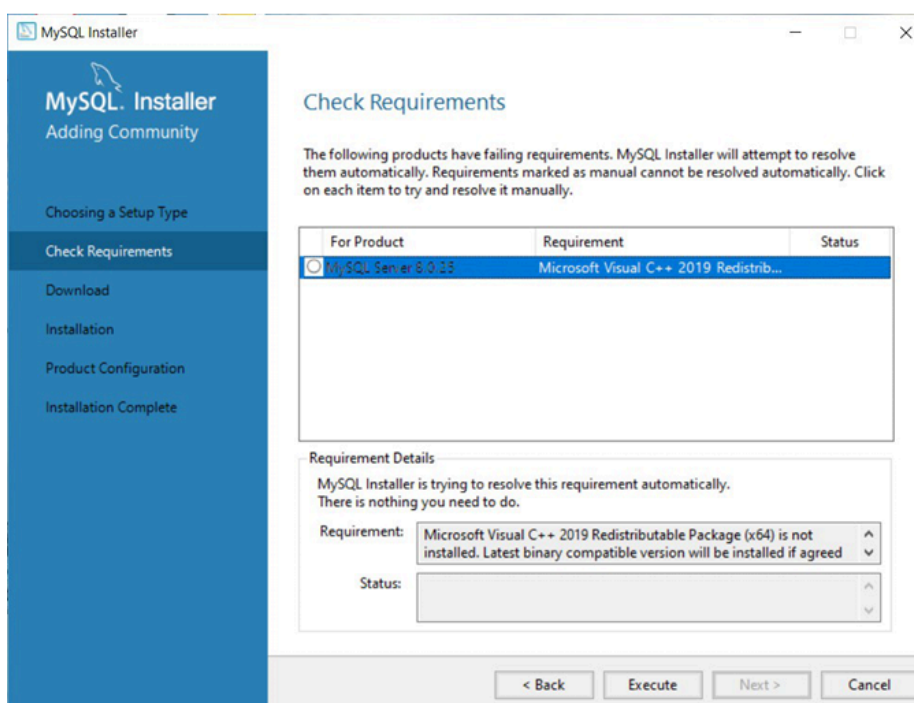
2. Run the latest MySQL installer .exe

3. Select **SERVER ONLY** and then press **NEXT**

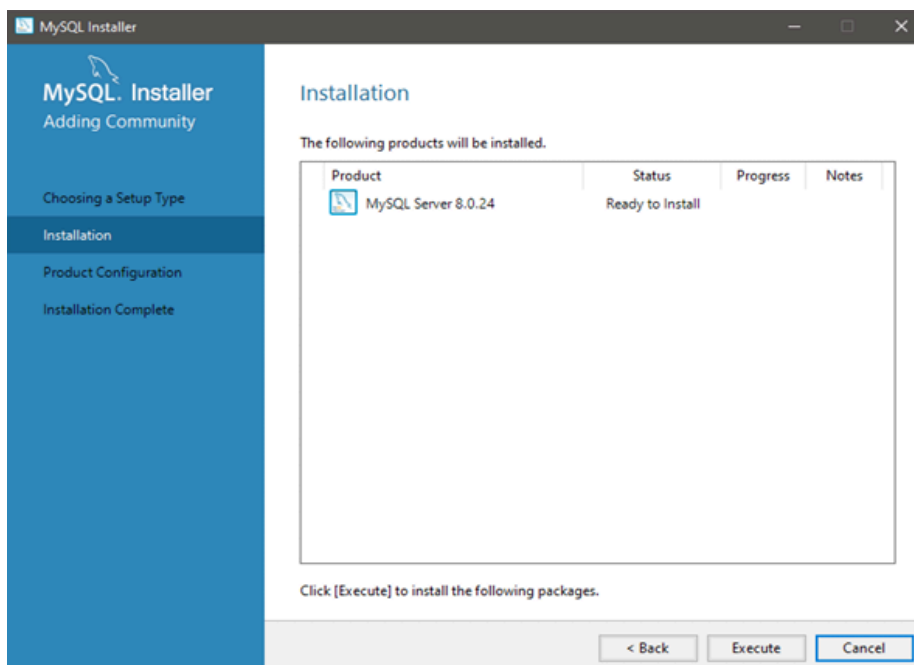


The screenshot shows the MySQL Installer window titled "MySQL Installer" with the subtitle "Adding Community". The window has a sidebar with navigation options: "Choosing a Setup Type", "Download", "Installation", and "Installation Complete". The main area is titled "Choosing a Setup Type" and contains the instruction "Please select the Setup Type that suits your use case." There are five radio button options: "Developer Default" (installs all products needed for MySQL development purposes), "Server only" (selected, installs only the MySQL Server product), "Client only" (installs only the MySQL Client products, without a server), "Full" (installs all included MySQL products and features), and "Custom" (manually select the products that should be installed on the system). A "Setup Type Description" box on the right contains the text: "Installs only the MySQL Server. This type should be used where you want to deploy a MySQL Server, but will not be developing MySQL applications." At the bottom right, there are "Next >" and "Cancel" buttons.

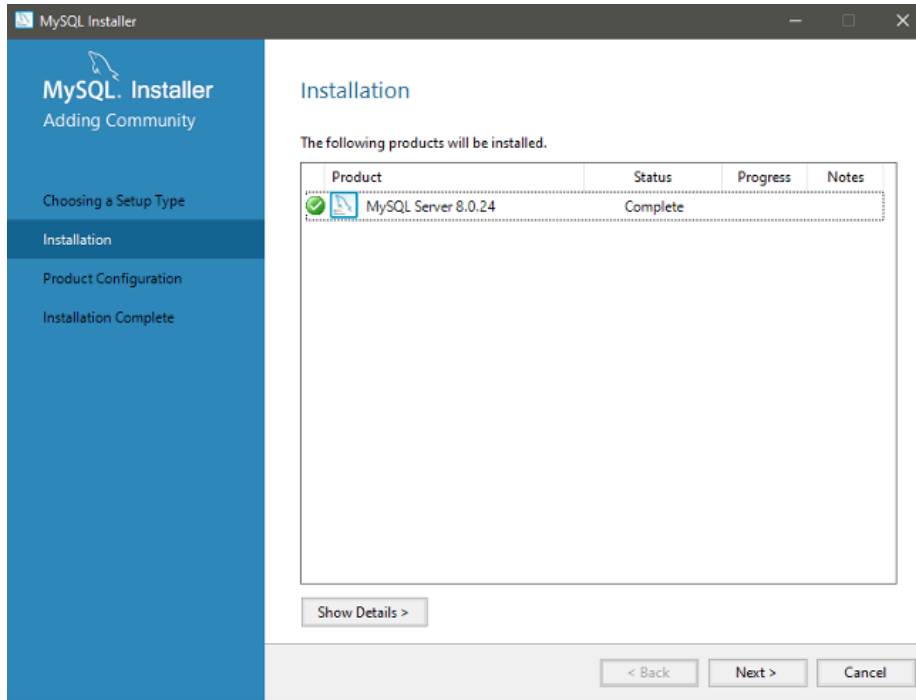
3b. If you get a screen telling you to install missing dependencies, click **EXECUTE**



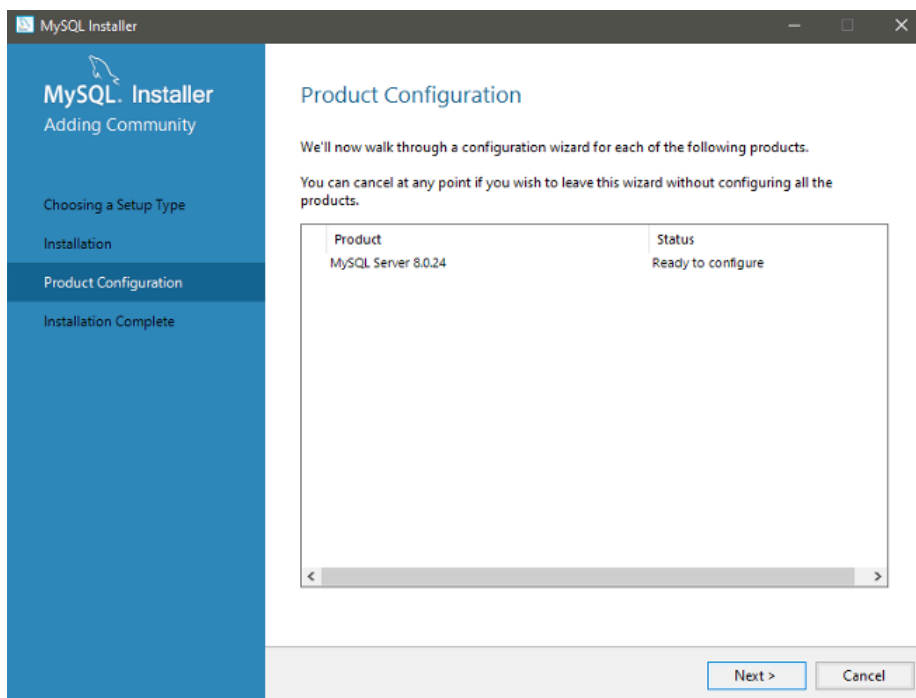
4. Click **EXECUTE**



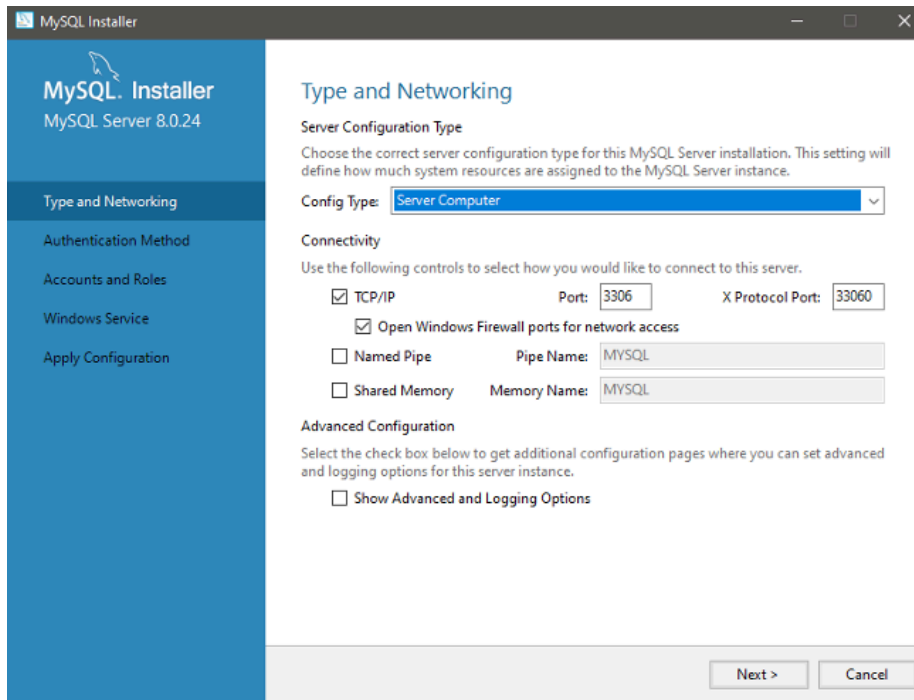
5. Click **NEXT**



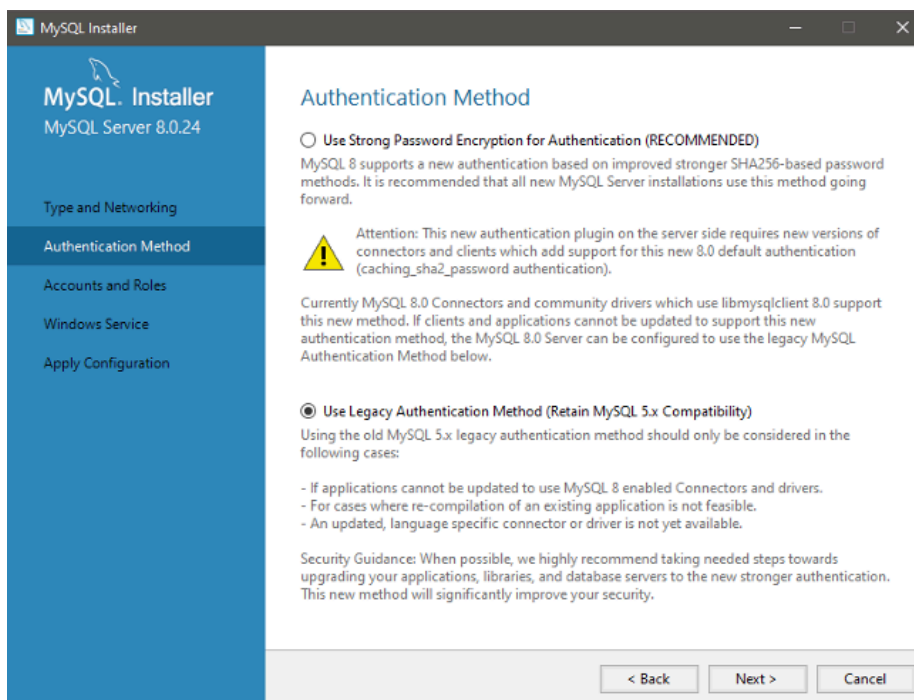
6. Click **NEXT**



## 7. Select **SERVER COMPUTER** from the drop-down menu

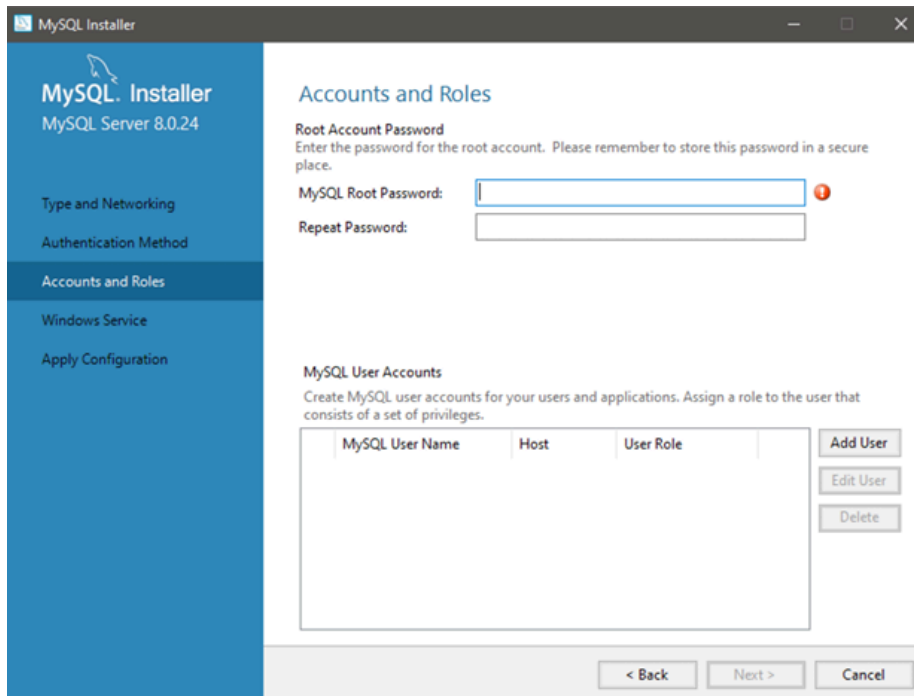


## 8. Select **USE LEGACY AUTHENTICATION METHOD**



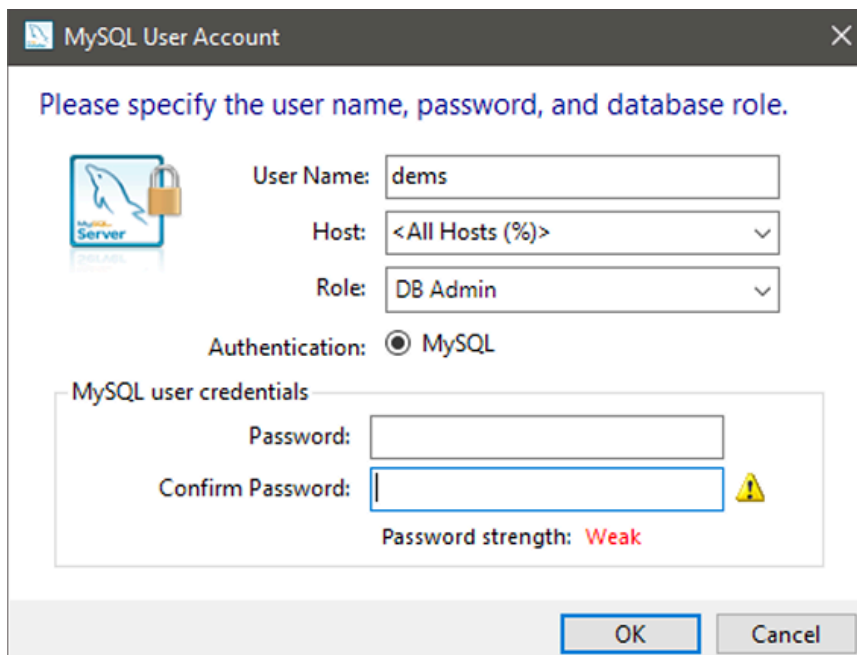
9. Enter a strong password.

**Note:** Password cannot be recovered if lost.

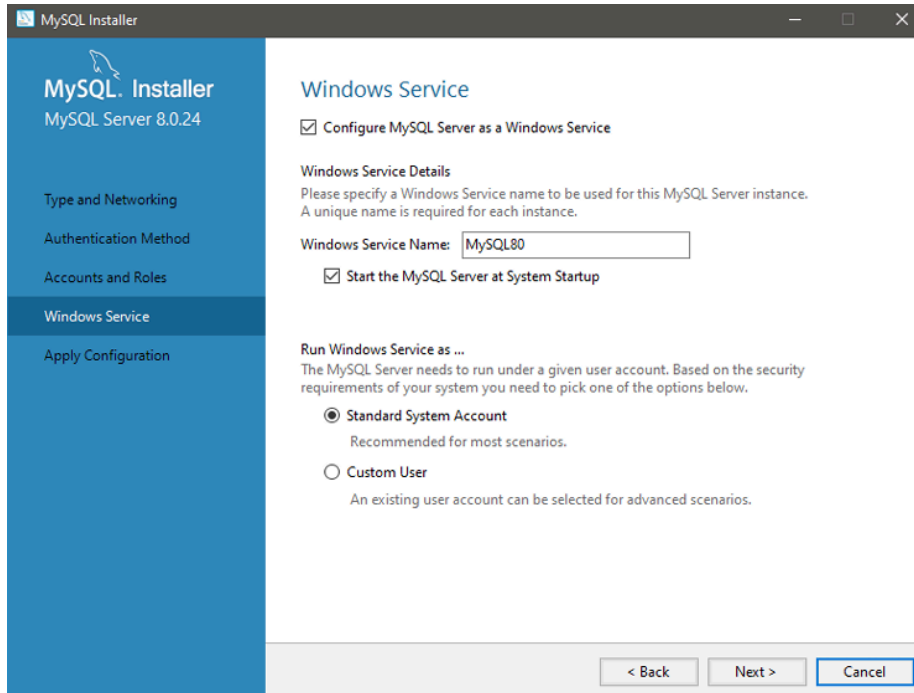


10. Click **ADD USER**

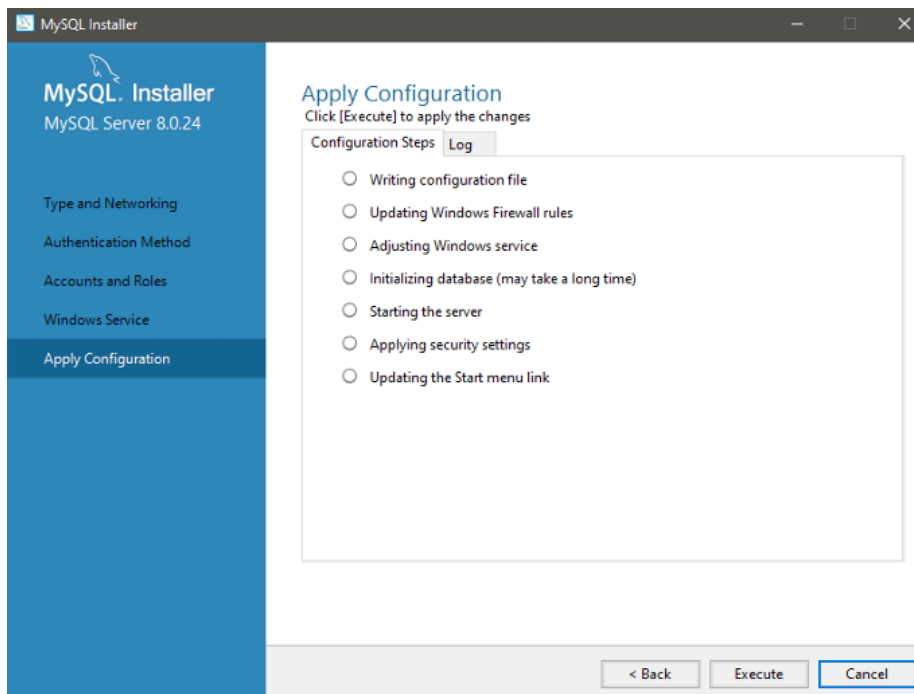
Set the User Name to “dems” and enter your password. Make sure all drop-down options match the picture below.



## 11. Click **NEXT**

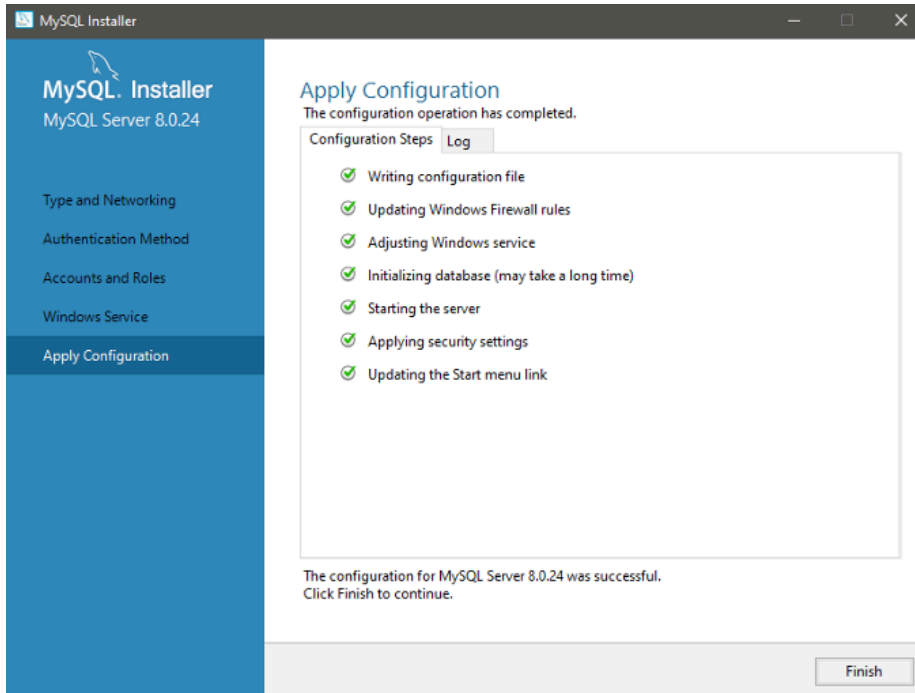


## 12. Click **EXECUTE**

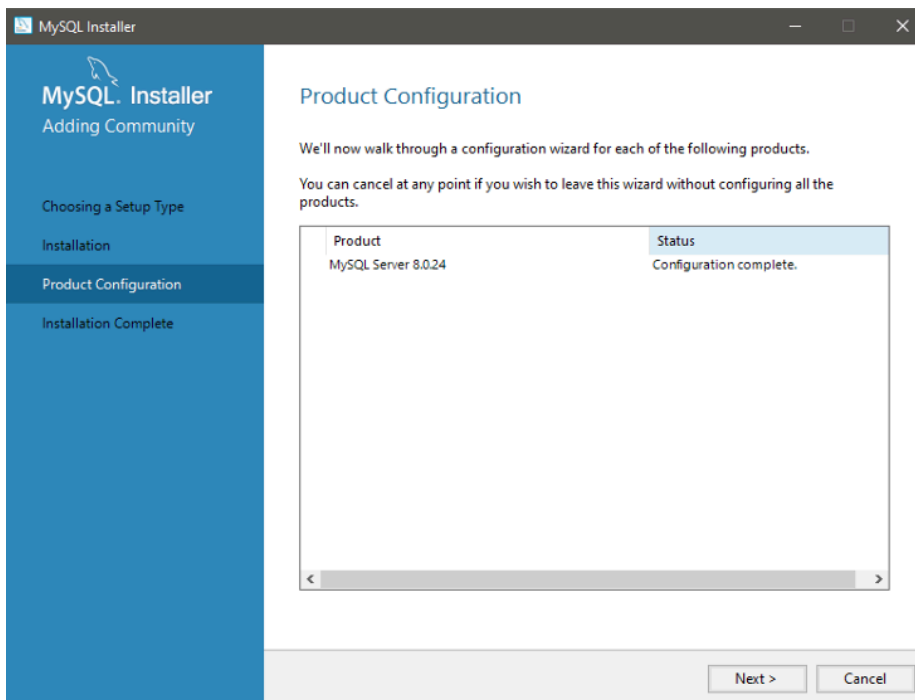




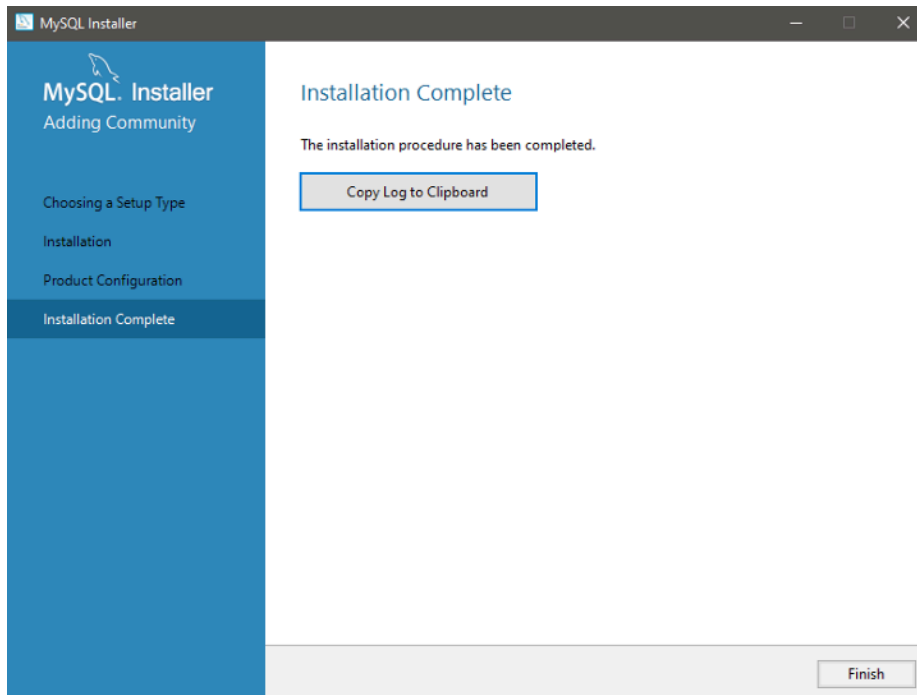
### 13. Click **FINISH**



### 14. Click **NEXT**

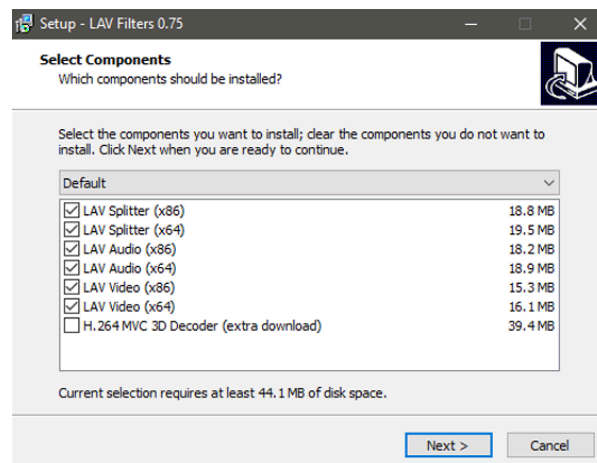


## 15. Click **FINISH**

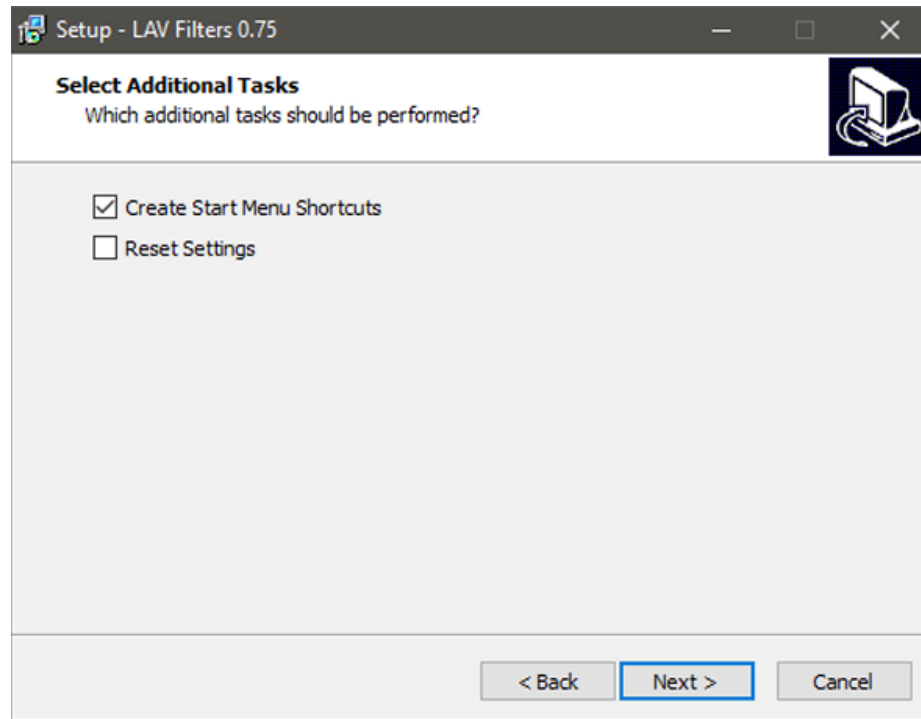


## **Dependencies - LAVFilters**

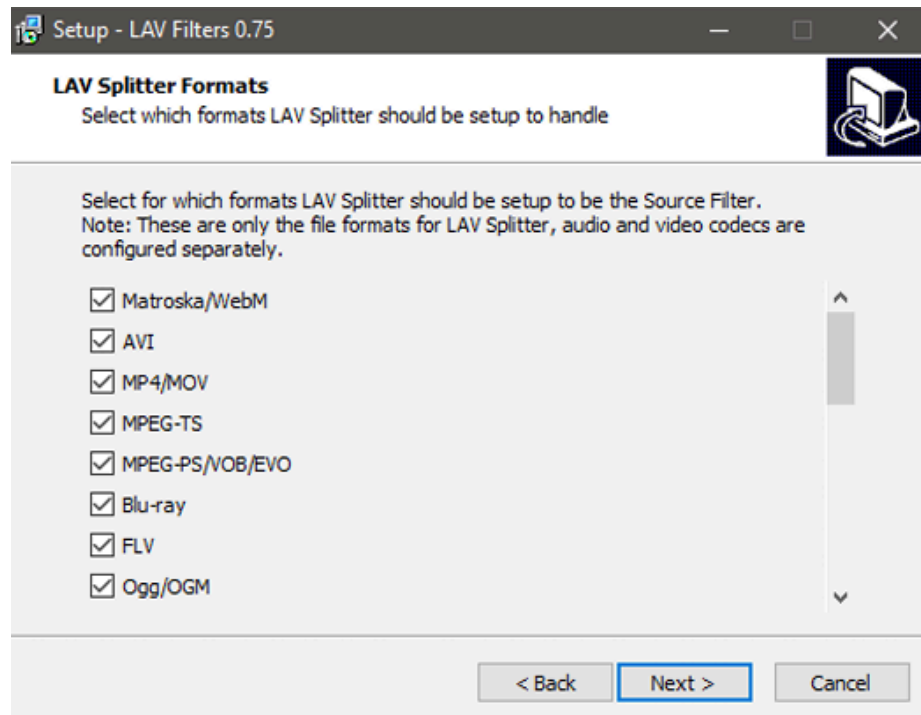
1. Download LAVFilters from the link below  
[LAVFilters Download](#)
2. Scroll down and download the latest LAV filter, then run the LAVFilters.exe  
*Note:* If there is no .exe file visible, look for the file that says “application” on the right side.
3. Click **NEXT**



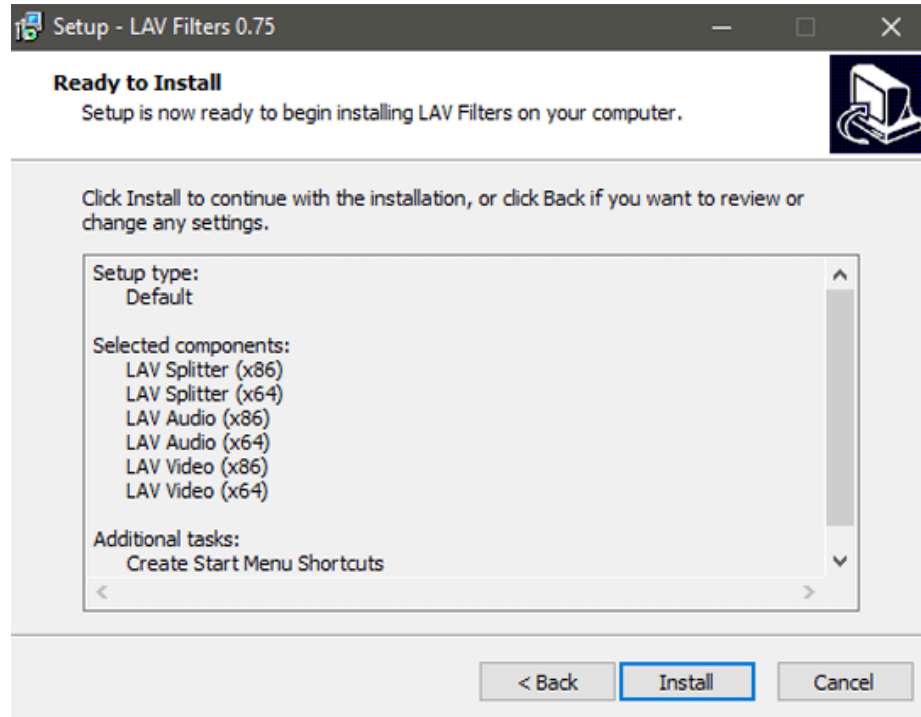
4. Click **NEXT**



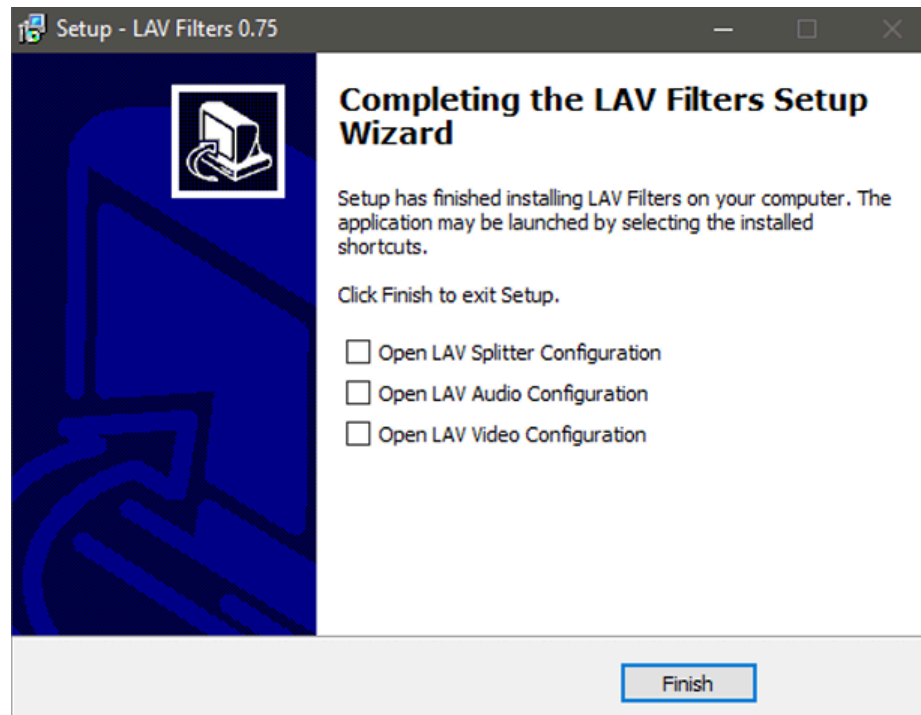
5. Click **NEXT**



6. Click **INSTALL**



7. Click **FINISH**

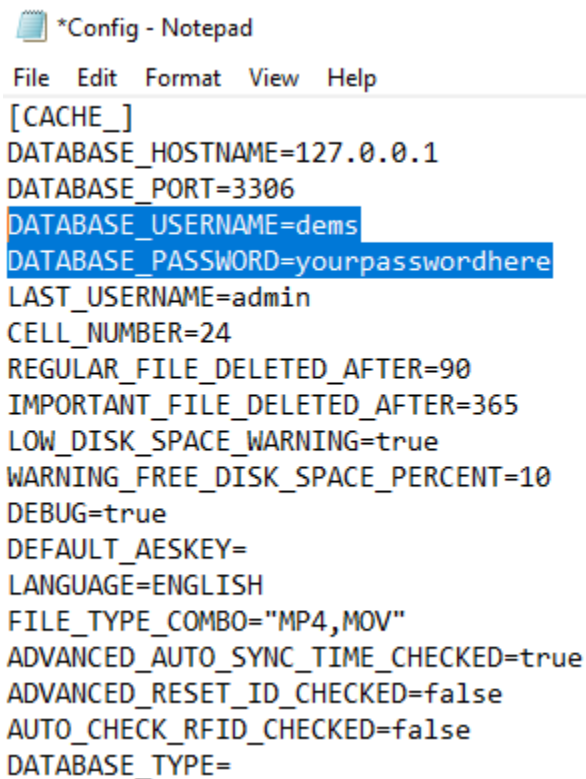


**Note:** Make sure you restart your computer after installing the LAV filters.

# DEMS 2.0

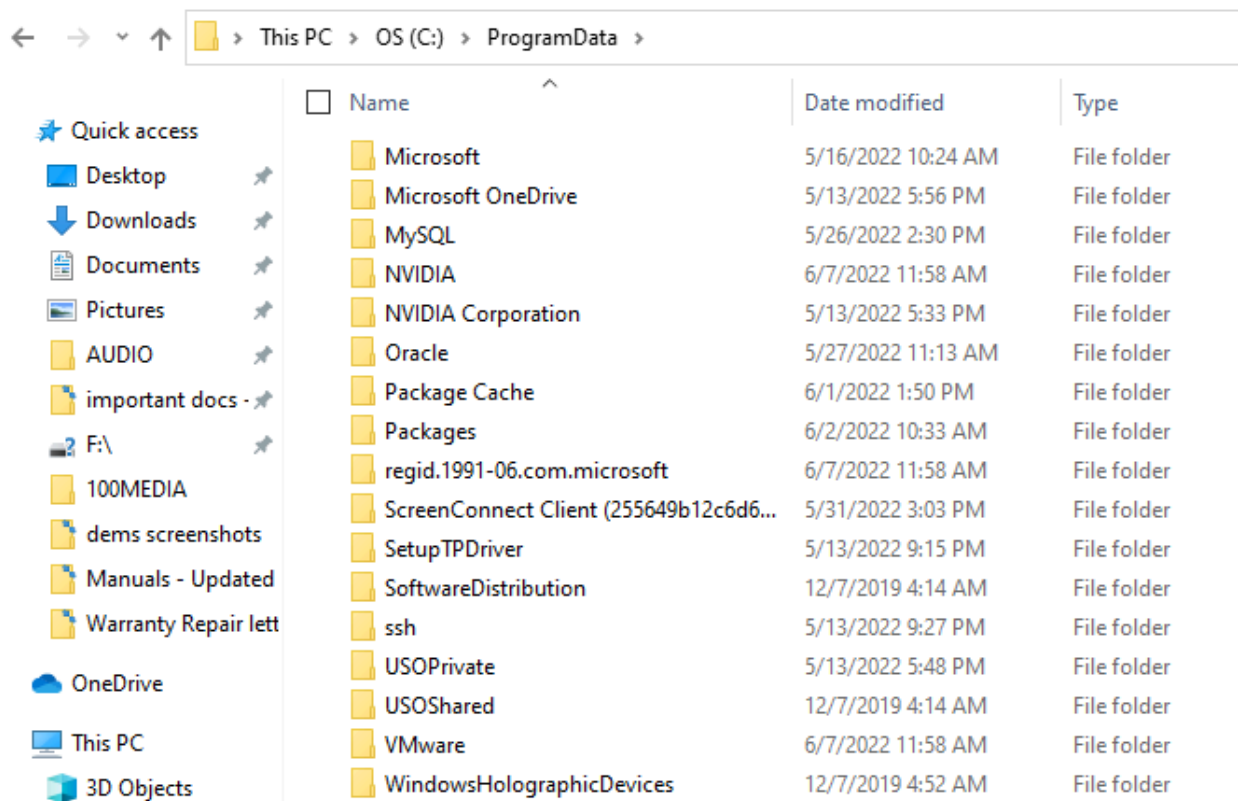
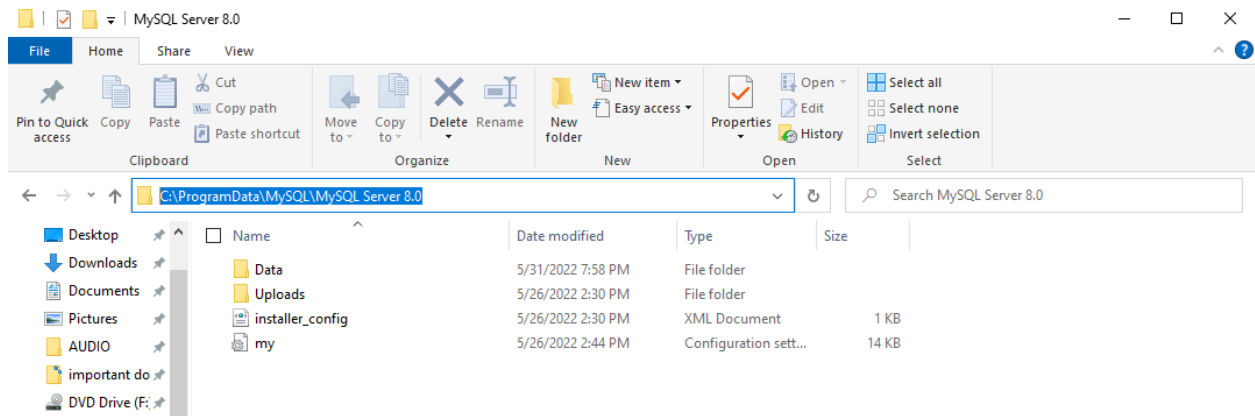
## [DEMS 2.0 Software Download Link](#)

1. Once downloaded, click on the .zip file and select “Extract All”
2. After the extraction, move the folder into a safe spot, such as your C: drive or the Documents folder
3. Double click into the folder you just moved
4. Move the “config.ini” file onto your desktop screen, right-click on the file, and select edit. Set the password and user to what you entered earlier in the MySQL server install process (Step 10)



```
*Config - Notepad
File Edit Format View Help
[CACHE_]
DATABASE_HOSTNAME=127.0.0.1
DATABASE_PORT=3306
DATABASE_USERNAME=dems
DATABASE_PASSWORD=yourpasswordhere
LAST_USERNAME=admin
CELL_NUMBER=24
REGULAR_FILE_DELETED_AFTER=90
IMPORTANT_FILE_DELETED_AFTER=365
LOW_DISK_SPACE_WARNING=true
WARNING_FREE_DISK_SPACE_PERCENT=10
DEBUG=true
DEFAULT_AESKEY=
LANGUAGE=ENGLISH
FILE_TYPE_COMBO="MP4,MOV"
ADVANCED_AUTO_SYNC_TIME_CHECKED=true
ADVANCED_RESET_ID_CHECKED=false
AUTO_CHECK_RFID_CHECKED=false
DATABASE_TYPE=
```

5. After you have entered the password, save the file and close it. Drag that new updated file back into that folder the file that it was taken out of, to update it accordingly
6. Navigate to “C:\ProgramData\MySQL\MySQL Server 8.0”
  - a. The folder **ProgramData** is a hidden folder, which means when looking for it in file explorer it will not be found
  - b. To find the folder, copy and paste the above path that was provided into the search bar. A screenshot will be provided below



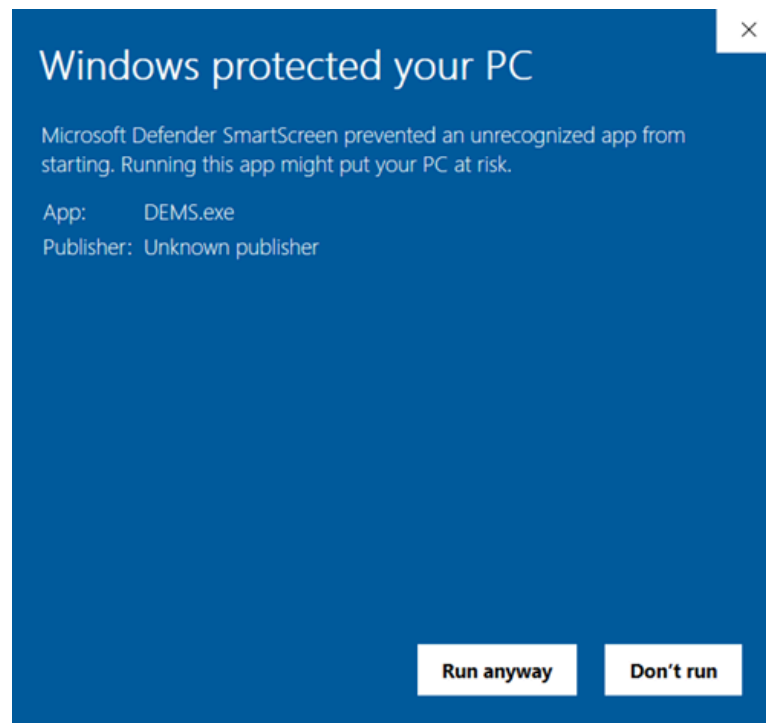
The contents of the hidden folder **ProgramData** are shown above.

- Once navigated to the folder, copy the “my.ini” file and paste it onto your desktop screen
- Click on this link [my.ini file](#), and copy all of the contents in this file. Pressing the keys ctrl + A at the same time will highlight everything on the page
- Right-click that file you just moved onto your desktop and select edit, delete everything in that file, and paste in what you just copied from the above link

- f. Once the file is updated, save it and copy and paste the file back into the folder it was taken from
7. Right-click on the DEMS.exe application and create a shortcut. Drag and drop the shortcut onto your desktop screen, and then double click to run DEMS
- a. If your PC prompts you with this message, click **MORE INFO**



- b. Click **RUN ANYWAY**



8. Send a copy of the code you receive on the screen to [support@patroleyes.com](mailto:support@patroleyes.com) and a license will be created for you.

**Note:** Once this license has been generated you cannot switch this to another PC. There will be an additional charge for multiple licenses.

**Note:** Each PC will require its own license key. Please contact us for additional licenses.

**Repeat the above steps on each computer you wish to manage your data from.**

## **PatrolEyes DEMS Overview**

**File Manage:** The **file manage** tab allows users to search and manage evidence.

**User Mange:** The **user manage** tab allows administrators to create users.

**Audit Log:** The operations tab is where you will view all the operations that happen within the software such as viewing files, deleting files, exporting files, and who accesses the software.

## **Software Configuration**

To configure the software login as an administrator and click the Settings tab.

### **Default Admin Login:**

**Username:** admin

**Password:** 123456

**Upload Path:** The Upload Path setting allows you to change the storage directory location for local files.

**Upload Window:** Sets the number of cameras that can be connected to the computer and upload data simultaneously.

**Regular File Deleted After:** Sets the retention period for all files marked as **Normal**.

**Important File Deleted After:** Sets the retention period for all files marked as **Important**.

**Low Disk Warning:** Prompts you with a warning message to indicate storage is low.

## **USB Port Configuration**

To allow the software to recognize the cameras you must first configure the camera to a USB port.

## **Single Docking Station/Camera Setup**



1. Click the **Settings** button in the upper left corner of the software.
2. Click **Adjust Port**.
3. Connect your camera via USB
4. Once you see **SUCCESS**, disconnect your camera and click **Finish Adjust Port**.
5. Now you have successfully paired the camera with the software and the USB port.

**Note:** The same USB port must be used when you connect your camera for uploading data.

**Note:** It will be beneficial to adjust all ports on your computer, to prevent any confusion if you accidentally use the wrong port.

## **8 Camera Docking Station Setup**

1. Click the **Settings** button in the upper left corner of the software.
2. Click **Adjust Port**.
3. Connect your camera to a port on the docking station.
4. Once you see **SUCCESS**, remove the camera and move it to the next port on the docking station. Continue this process until you have activated all USB ports on the docking station.
5. Press **Finish Adjust Port** to complete the configuration.
6. Now you have successfully paired the camera with the software and the 8 camera docking station.

**Note:** You can use the same camera for this process.

## **User Management**

To create and edit users for the software, login to the software as admin, click **User Manage**, and then click **Add User** to pull up the window to add a user. To edit an existing user, select the pencil icon on the top right of the user manage page.

Username

Password

Confirm

Department

Permissions:

- View Files Uploaded
- Edit File Info 
  - Case No. & Notes
  - Mark/Unmark Important
- Export File(s)
- Delete File(s)
- Add User
- Audit Log
- Settings

Save Cancel

**Username:** This is the login users will use to login to the software

**Password:** Please make sure to set a strong password

**Department:** Enter your department name

**Permissions:**

**View Files Uploaded:** This allows the user to view files they have uploaded.

**Edit File Info:** This allows the user to add notes, and cases to files and mark files as important or normal.

**Export Files:** This allows the user to export files for court

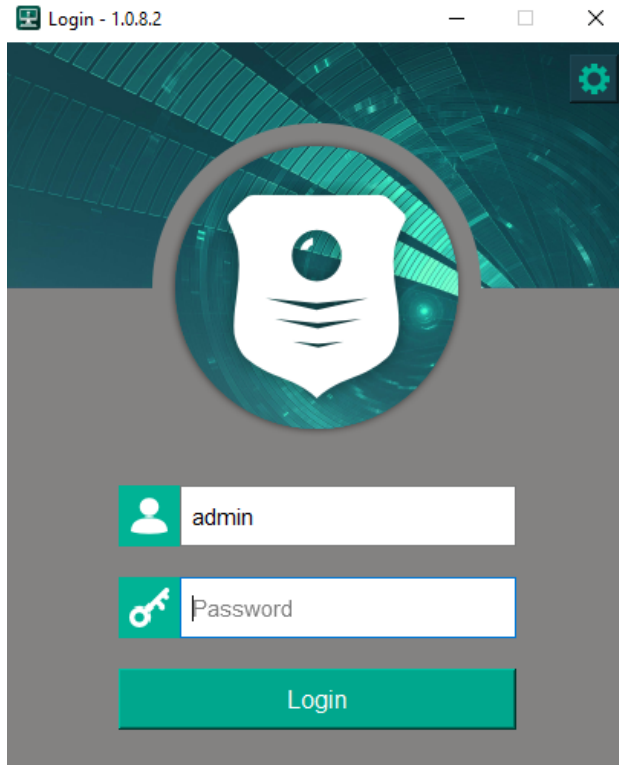
**Delete Files:** This allows the user to delete data

**Add User:** This allows the user to add other users

**Operation log:** This allows the user to view the audit log data

**Settings:** This allows the user to view and modify software settings

**To change a password for any user, log out of the software and click on the gear icon in the upper right of the login window. Then simply put in the username and old password, then enter a new desired password.**



## Searching and Organizing Data

Login to your account and click **File Manage**.

Device User: <input type="text"/>	User ID: <input type="text"/>	Device ID: <input type="text"/>	Department: <input type="text"/>
Case No.: <input type="text"/>	Note: <input type="text"/>	File Type: <input type="text" value="MP4,MOV"/>	<input type="button" value="Search"/>
Encrypted: <input type="text" value="All"/>	Important: <input type="text" value="All"/>	GPS: <input type="text" value="All"/>	<input type="button" value="Reset"/>
Date Created: <input type="checkbox"/> 2022-05-27 - 2022-06-03	Date Uploaded: <input type="checkbox"/> 2022-05-27 - 2022-06-03		

There are multiple ways to search for files. You can search by the User, Device ID, Department, Case Number, Notes, Date Created, Date Uploaded, File Importance Level, and File Type.

Right-clicking on a file will bring up a menu of options that you can apply to the file.

- Open

---

- Case No.

---

- Notes

---

- Important

---

- Audit Log

---

- Reassociate

---

- Export

---

- Remove

**Open:** Immediately opens the file for playback

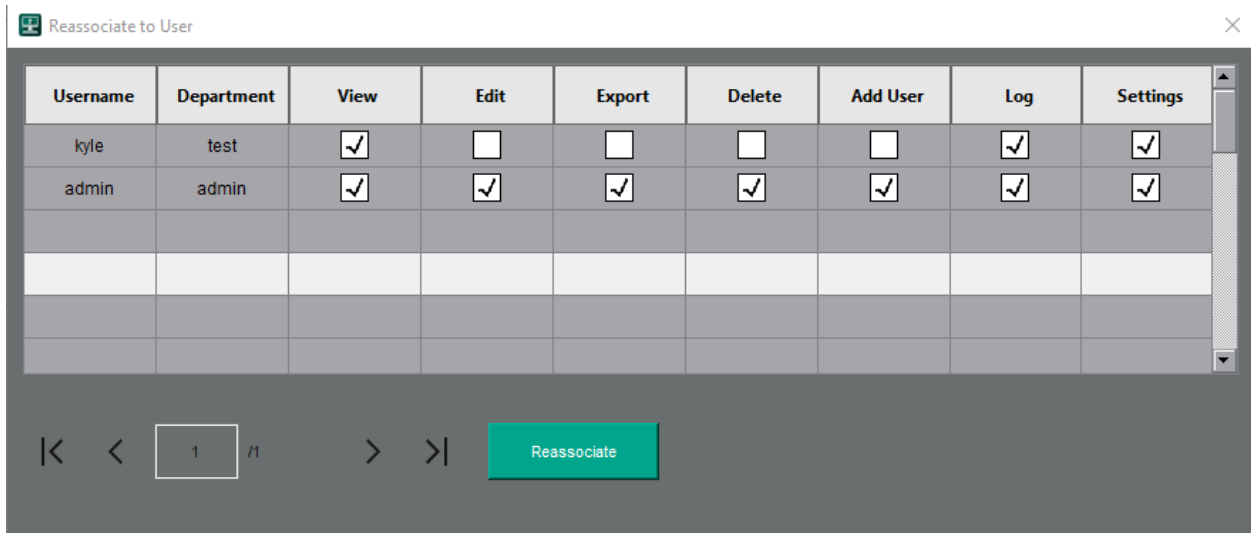
**Case No.:** Will open a dialog box for you to add a case number

**Notes:** Will open a dialog box for you to add any notes about the file

**Important:** Will mark the file as important

**Audit Log:** View the audit trail logs

**Reassociate:** If files are mistakenly uploaded to the wrong user an admin can reassociate the files to the correct user



**Note:** Once you select reassociate, the window shown above will appear, allowing you to select a user to reassociate the desired video to.

**Export:** Exports the file to your specified location

**Remove:** The file will be grayed out once deleted

[Request a free 14-day trial of our automated redaction software to blur out faces, audio, or objects.](#)

## **Video Playback**

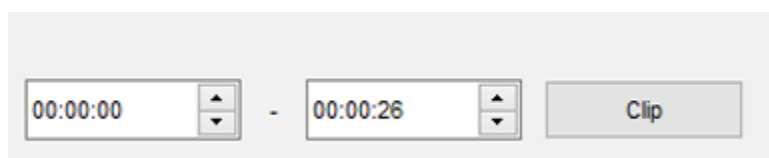
Double-clicking on a file when in the file manager tab will automatically bring up a video player to play the selected video.

**An example is shown on the following page:**



You can directly manage the video from this screen. Some actions you can perform from this screen include; adding notes, marking the file as important, exporting the file, and deleting the file. All of which are dependent upon the user permissions.

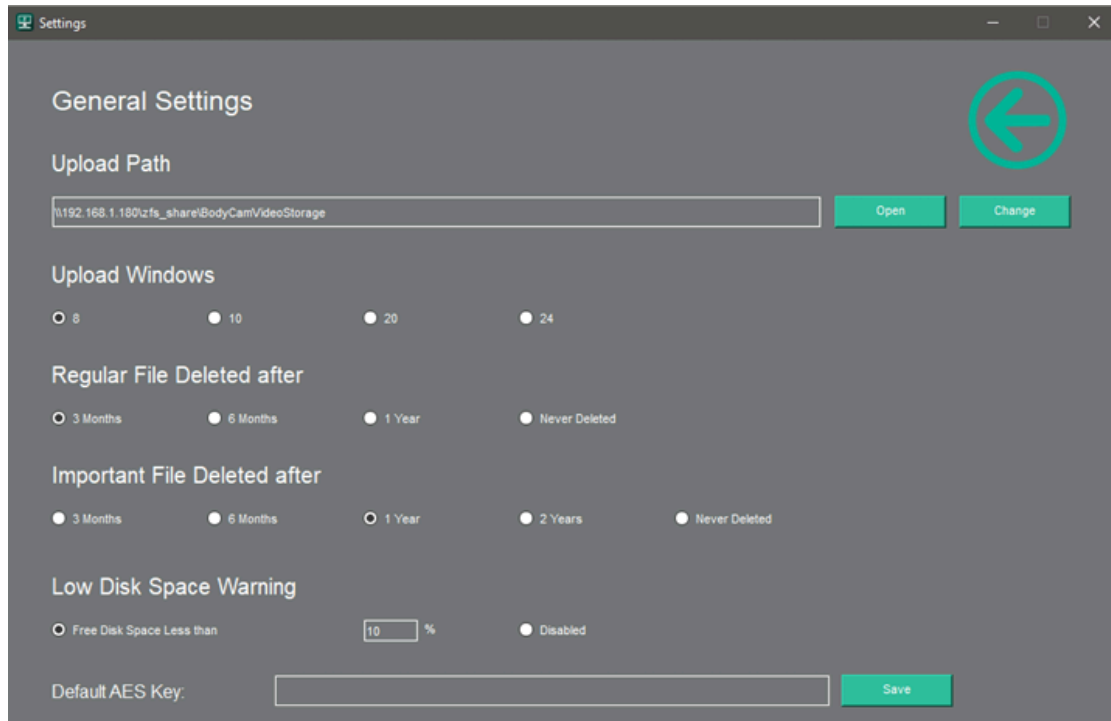
**Clip Feature:** The clip feature allows you to quickly cut down the size of the video to only highlight important events in the video



Simply select the duration of the video you want to clip and press **Clip**, then select a destination you would like the file to be exported to. Some common destinations would be documents, desktops, or an external drive.

## Software Settings

Settings such as storage location, retention periods, and other general settings are available via the **Settings** tab. Only users with the appropriate permissions can access this screen and change settings.



**Upload Path:** Where the location of the files will be stored

**Note:** Must be a network drive if using the DEMS in networking mode

**Upload Windows:** Sets the max amount of cameras that can upload to the computer at once

**Regular File Deleted After:** Sets the period of time that regular files will automatically be deleted

**Important File Deleted After:** Sets the period of time that important files will automatically be deleted

**Low Disk Space Warning:** Sets the percentage at which you want to be alerted when your storage is getting close to being full

**Default AES Key:** If you are using our DV10-PRO cameras with file encryption enabled, you will need to copy the AES key from Cam Manager and paste it into this field

# **Software Setup**

The PatrolEyes DEMS 2.0 has two ways that the system can be set up. Please review the options below to select the system that will work best for your needs.

## **1. The Two User System**


Under the Two User System, only two accounts are created. One for uploading all data from all cameras and one to manage the data. This method is a simplistic way to use the system and works best for small departments with less than 5 officers. With this system officers are all assigned 1 user account and will have access to other officers' data for review. This allows each officer to upload under a shared account and does not require logging in or out every time data needs to be transferred, saving time. You will still be able to search by officer name when managing data. However, the downside to this method is that the built-in audit trail will no longer function as intended since each officer will be using the general account.

## **2. Multi-User System**


Under the Multi-User System, every officer has an account created for them. This allows each officer to manage their data using their account. This method gives you the benefit of all system features the DEMS 2.0 has to offer. The downside to this method is that multiple users cannot upload to the software at the same time on the same PC. For example, if user 1 is logged into the software and uploading, user 2 must wait until user 1 is finished uploading. User 2 can then log into their account and upload footage to their respected account. If you wish to have multiple users uploading at the same time you will need an additional license for another PC and to use our advanced networked version of the software.

### **The Two User System**

1. Login as the administrator and click the **User Manage** tab
2. Add the general user and specify permissions you would like them to have, then click **Save**

3. Click the back button to return to the main screen
4. Log out of the software by clicking the  button in the top right corner
5. Login as the newly created user account
6. Connect your camera and right-click on the camera's port and select **Set Device User**
7. Enter the full name of the user to whom the camera is assigned
8. You are now able to connect your camera to the system, and your data will automatically start to upload
9. Once the data has been successfully uploaded, it will be automatically removed from the camera
10. You can now click the **File Manage** tab to start managing the data

## Multi-User System

1. Login as the administrator and click on the **User Manage** tab
2. Create users for all officers assigned a body camera
3. Click the back button to return to the main screen
4. Log out of the software by clicking the  button in the top right corner
5. Login as the newly created user account
6. Connect your camera and right-click on the camera's port and select **Set User Device**
7. Enter the full name of the user to whom the camera is assigned



8. You are now able to connect your camera to the system, and your data will automatically start to upload
9. Once the data has been successfully uploaded, it will automatically be removed from the camera
10. The officer can now log out of their account, and allow another officer to log in and start uploading footage

### **Kiosk Mode:**

Under this mode, the computer is taken over by the DEMS software completely. This mode ensures added security, as unauthorized users will not be able to navigate the computer normally. Before installing the kiosk mode, there needs to be assurance that the computer will only ever be used for the dems software. In addition to kiosk mode, both the two user system and the multi-user system can be used while in kiosk mode.

**Note:** Kiosk mode is a separate software download.

Kiosk Mode download available here: [Kiosk Mode](#)

## **FAQs**

- ❖ I open the program and it says “Database connection failed”.
  - Make sure you have edited the **config.ini** file with your username and password from the DEMS 2.0 download (Step 4).
  - Make sure you copied the contents from the **my.ini** file link in step 6 D and put it into the program data folder.
- ❖ I open the program and it says “Bridge does not exist”.
  - Make sure you have **not** moved the dems application out of the folder, make sure you create a shortcut and move that to the desktop. If you did move the dems application out, simply put it back into the folder.
- ❖ I added all my users, but no cameras will upload.
  - Make sure you have bound the USB ports, directions found in this manual as “**USB Port Configuration.**”
- ❖ I uploaded data to the wrong user account, can the files be moved to a different user?
  - Yes, have an administrator login and reassociate the files to the correct account.
- ❖ When I try to “**Adjust Port**” and connect my cameras, it never says “**Success.**”
  - Make sure that the cameras are powered on and **not** recording when you plug them in. Also, make sure you are not using a USB hub (other than our 8 or 10-port docking station) when connecting the cameras.
- ❖ How do I create a shortcut on Windows 11?
  - Right click on the application, select show more options, then select shortcut.



# PATROLEYES

\*\*\* END USER LICENSE AGREEMENT \*\*\*

IMPORTANT: PLEASE READ THIS LICENSE CAREFULLY BEFORE USING THIS SOFTWARE.

## 1. LICENSE

By receiving, opening the file package, and/or using Digital Evidence Management Software ("Software") containing this software, you agree that this End User License Agreement (EULA) is a legally binding and valid contract and agree to be bound by it. You agree to abide by the intellectual property laws and all of the terms and conditions of this Agreement.

Unless you have a different license agreement signed by StuntCams, LLC your use of Digital Evidence Management Software indicates your acceptance of this license agreement and warranty.

Subject to the terms of this Agreement, StuntCams, LLC grants to you a limited, non-exclusive, non-transferable license, without the right to sub-license, to use Digital Evidence Management Software in accordance with this Agreement and any other written agreement with StuntCams, LLC. StuntCams, LLC does not transfer the title of Digital Evidence Management Software to you; the license granted to you is not a sale. This agreement is a binding legal agreement between StuntCams, LLC and the purchasers or users of Digital Evidence Management Software.

If you do not agree to be bound by this agreement, remove Digital Evidence Management Software from your computer now and, if applicable, promptly return to StuntCams, LLC by mail any copies of Digital Evidence Management Software and related documentation and packaging in your possession.

## 2. DISTRIBUTION

Digital Evidence Management Software and the license herein granted shall not be copied, shared, distributed, re-sold, offered for resale, transferred, or sub-licensed in whole or in part except that you may make one copy for archive purposes only. For information about the redistribution of Digital Evidence Management Software contact StuntCams, LLC.

## 3. USER AGREEMENT

### 3.1. USE

Your license to use Digital Evidence Management Software is limited to the number of licenses purchased by you. You shall not allow others to use, copy or evaluate copies of Digital Evidence Management Software.

### 3.2. USE RESTRICTIONS

You shall use Digital Evidence Management Software in compliance with all applicable laws and not for any unlawful purpose.

Each licensed copy of Digital Evidence Management Software may be used on one single computer location by one user. Use of Digital Evidence Management Software means that you have loaded, installed, or run Digital Evidence Management Software on a computer or similar device. If you install Digital Evidence Management Software onto a multi-user platform, server, or network, each and every individual user of Digital Evidence Management Software must be licensed separately.

You may make one copy of Digital Evidence Management Software for backup purposes, providing you only have one copy installed on one computer being used by one person. Other users may not use your copy of Digital Evidence Management Software. The assignment, sublicense, networking, sale, or distribution of copies of Digital Evidence Management Software are strictly forbidden without the prior written consent of StuntCams, LLC. It is a violation of this agreement to assign, sell, share, loan, rent, lease, borrow, network, or transfer the use of Digital Evidence Management Software. If any person other than yourself uses Digital Evidence Management Software registered in your name, regardless of whether it is at the same time or at different times, then this agreement is being violated and you are responsible for that violation.

### 3.3. COPYRIGHT RESTRICTION

This Software contains copyrighted material, trade secrets, and other proprietary material. You shall not, and shall not attempt to, modify, reverse engineer, disassemble or decompile Digital Evidence Management Software. Nor can you create any derivative works or other works that are based upon or derived from Digital Evidence Management Software in whole or in part.

StuntCams, LLC's name, logo, and graphics file that represents Digital Evidence Management Software shall not be used in any way to promote products developed with Digital Evidence Management Software. StuntCams, LLC retains sole and exclusive ownership of all rights, title, and interest in and to Digital Evidence Management Software and all Intellectual Property rights relating thereto.

Copyright law and international copyright treaty provisions protect all parts of Digital Evidence Management Software, products, and services. No program, code, part, image, audio sample, or text may be copied or used in any way by the user except as intended within the bounds of the single user program. All rights not expressly granted hereunder are reserved for StuntCams, LLC.

#### 3.4. LIMITATION OF RESPONSIBILITY

You will indemnify, hold harmless, and defend StuntCams, LLC, its employees, agents, and distributors against any and all claims, proceedings, demands, and costs resulting from or in any way connected with your use of StuntCams, LLC's Software.

In no event (including, without limitation, in the event of negligence) will StuntCams, LLC, its employees, agents, or distributors be liable for any consequential, incidental, indirect, special, or punitive damages whatsoever (including, without limitation, damages for loss of profits, loss of use, business interruption, loss of information or data, or pecuniary loss), in connection with or arising out of or related to this Agreement, Digital Evidence Management Software or the use or inability to use Digital Evidence Management Software or the furnishing, performance or use of any other matters hereunder whether based upon contract, tort or any other theory including negligence.

StuntCams, LLC's entire liability, without exception, is limited to the customers' reimbursement of the purchase price of the Software (maximum being the lesser of the amount paid by you and the suggested retail price as listed by StuntCams, LLC ) in exchange for the return of the product, all copies, registration papers and manuals, and all materials that constitute a transfer of license from the customer back to StuntCams, LLC.

#### 3.5. WARRANTIES

Except as expressly stated in writing, StuntCams, LLC makes no representation or warranties in respect of this Software and expressly excludes all other warranties, expressed or implied, oral or written, including, without limitation, any implied warranties of merchantable quality or fitness for a particular purpose.

#### 3.6. GOVERNING LAW

This Agreement shall be governed by the law of the United States applicable therein. You hereby irrevocably attorn and submit to the non-exclusive jurisdiction of the courts of the United States therefrom. If any provision shall be considered unlawful, void, or otherwise unenforceable, then that provision shall be deemed severable from this License and not affect the validity and enforceability of any other provisions.

#### 3.7. TERMINATION

Any failure to comply with the terms and conditions of this Agreement will result in automatic and immediate termination of this license. Upon termination of this license granted herein for any reason, you agree to immediately cease use of Digital Evidence Management Software and destroy all copies of Digital Evidence Management Software supplied under this Agreement. The financial obligations incurred by you shall survive the expiration or termination of this license.

#### 4. DISCLAIMER OF WARRANTY

THIS SOFTWARE AND THE ACCOMPANYING FILES ARE SOLD "AS IS" AND WITHOUT WARRANTIES AS TO PERFORMANCE OR MERCHANTABILITY OR ANY OTHER WARRANTIES WHETHER EXPRESSED OR IMPLIED. THIS DISCLAIMER CONCERNS ALL FILES GENERATED AND EDITED BY DIGITAL EVIDENCE MANAGEMENT SOFTWARE AS WELL.

#### 5. CONSENT OF USE OF DATA

You agree that StuntCams, LLC may collect and use information gathered in any manner as part of the product support services provided to you, if any, related to Digital Evidence Management Software. StuntCams, LLC may also use this information to provide notices to you which may be of use or interest to you.

#### 6. PURCHASE AGREEMENT

All PatrolEyes Body Cameras ("Body Camera") that are to be used with the Software must be registered. Body Camera registration, Software, and updates are a yearly subscription-based license that will expire at the end of the contract. By installing the license key you agree to our terms and conditions.